



TETRA THROUGH THE CHANNEL (TTC) TETRA UPDATES AND STRATEGY 2023

DANIEL SCOTNEY - June 2023



INTRODUCTION



DANIEL SCOTNEY
TETRA Channel
UK, Ireland & Nordics
DIRECTOR OF SALES
TETRA CHANNEL EUROPE



MARTIN FUERST
DIRECTOR OF SALES
EASTERN EUROPE
& POLAND



MARKO CURKOVIC
TETRA Channel
EE, Poland & Baltics



SVEN LANGE
TETRA Channel
DACHL

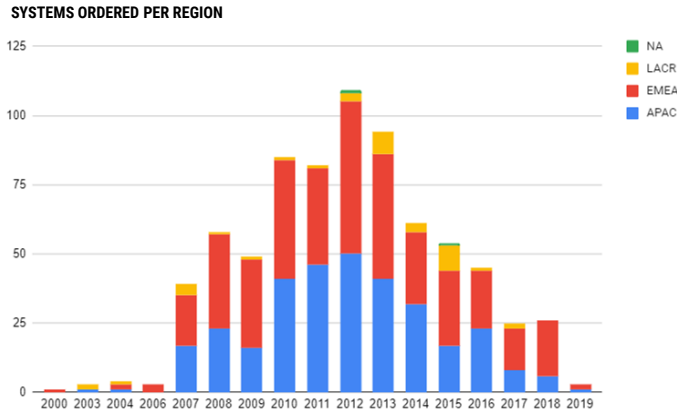


DIMETRA SMALL SYSTEMS WORLDWIDE SHIPMENTS

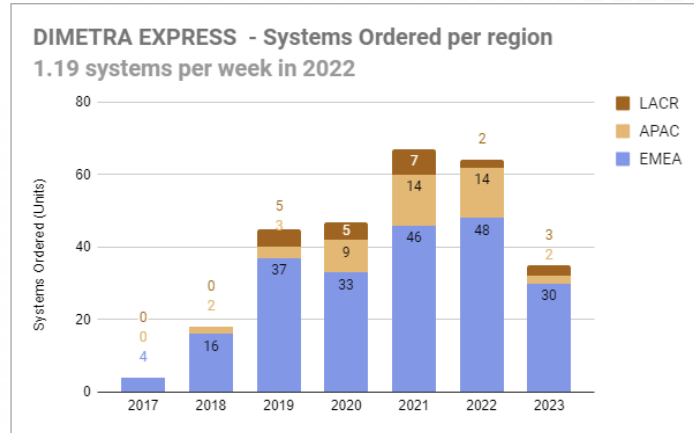
60M SALES (DEVICES AND SYSTEMS) IN 2022



LEGACY SYSTEMS (DIPM+DIPC)



DIMETRA EXPRESS



CONFIGURATION OPTIONS



DIMETRA EXPRESS MTS4 TETRA SYSTEM

- The Express Server is integrated in the MTS Cabinet
- 1-3 Base Radios (As the DIMETRA Express server takes a base radio slot)



DIMETRA EXPRESS MTS2 TETRA SYSTEM

- The Express Server is integrated in the MTS Cabinet
- 1 Base Radio (As the DIMETRA Express server takes a base radio slot)



DIMETRA EXPRESS MTS1 TETRA SYSTEM

- Modular configuration MTS1 + Standalone Express Server.
- Can be mounted outdoors with the right housing
- 1 Base Radio (or 2 base radios in dual mode)



DIMETRA EXPRESS STANDALONE TETRA SYSTEM

- Allows reuse of base stations
- Refresh of existing DIMETRA IP Compact or DIMETRA IP Micro



CONFIGURATION OPTIONS

WHEN TO POSITION DIMETRA EXPRESS Vs DIMETRA X CORE



	DIMETRA EXPRESS	DIMETRA X CORE	DIMETRA X CORE DEPLOYABLE
COVERAGE	10+ sites, single zone	1 - 5000+ sites, multi zone	1 - 120+ sites. Multi zone
CAPACITY	50 – 4000+ users	100 - 1M+ users	100 - 40k+ users
RESILIENCE	Link level redundancy, local / geographic redundancy	Site, link, edge, zone level, local / geographic redundancy	Customised resilience
SECURITY	Clear authentication, air interface encryption	Mission-critical security	Mission-critical security, customised security
PARTITIONING	Single user organisation	Multiple user organisations	Multiple user organisations
DEPLOYMENT	Flexible	Highly configurable	Fully customisable
APPLICATION	Enterprise & local	Public safety regional & nationwide	Military, defence & peacekeeping



ENSURE YOUR NETWORK IS CYBER-SECURE

DIMETRA EXPRESS IS A SECURE NETWORK THAT PROTECTS AGAINST UNAUTHORISED USERS, SNOOPERS AND HACKERS

- Layered defence architecture
- Air Interface Encryption – encrypts over the air communications and signalling between radios and base stations
- Authentication
- Cyber Security
- Firewall
- OS hardening
- Regular software updates include
- OS security patches
- Regular, fully tested antivirus updates

*Access to this service is dependent on the customer having a valid software maintenance license applied to the system, i.e. a service contract.





SET UP IN MINUTES

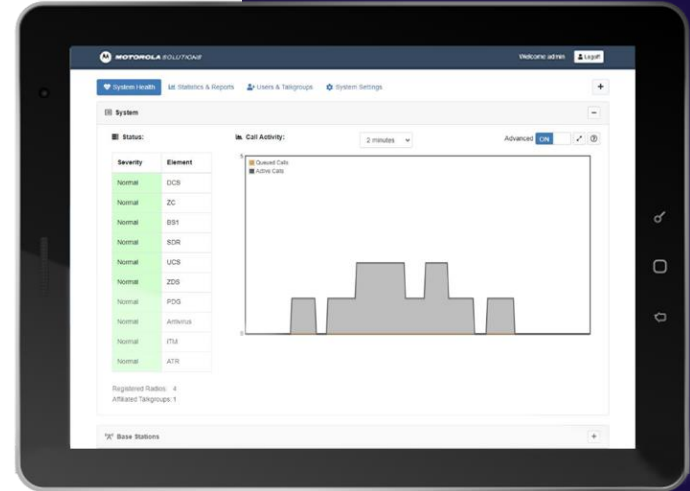
- Get up and running quickly
- DIMETRA Express integrates the switch and base radios into your existing IT network using a single IP address
- Simple browser-based installer
- Bulk upload of multiple subscriber radios
- Approximately 15 minutes from start to finish





BROWSER-BASED SYSTEM HEALTH MONITOR

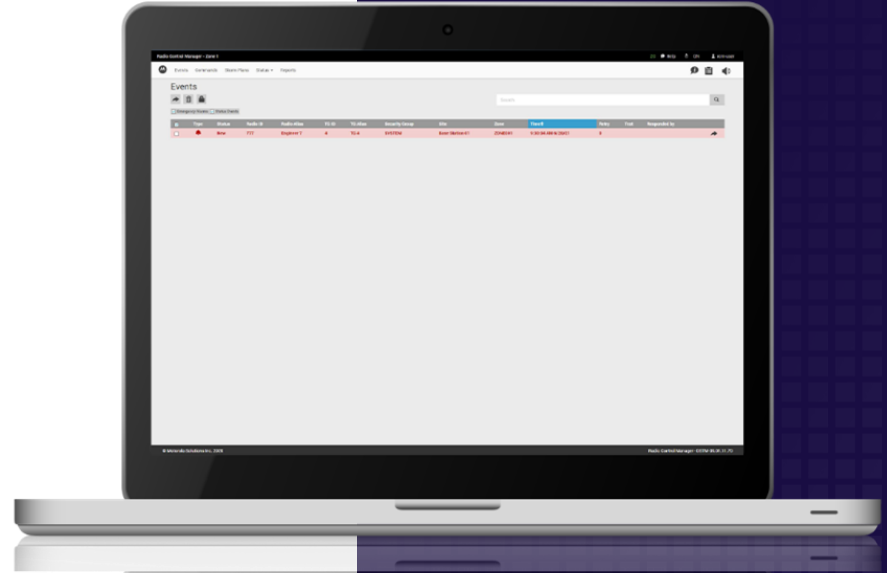
- Tracks the health of your system
- Monitors status of servers, base stations
- Enables faults to be identified so corrective action can be taken
- For more detailed reporting - fault forwarding API enables a third party solution to be connected for extended fault management





BROWSER-BASED RADIO CONTROL MANAGER APPLICATION

- Easily see what is happening in a radio fleet
 - Check emergency alarms
 - Monitor device status
 - Temporarily disable ("Stun") a radio
 - Remove a radio from the system
 - Add or remove talkgroups
 - Create or schedule reports
 - Revive recovered radios that had been temporarily disabled





DIMETRA EXPRESS INFRASTRUCTURE SERVICES

AT-A-GLANCE

SERVICES	WARRANTY	ESSENTIAL	ADVANCED
Network Updates			
24x7x365 Remote Technical Support - Critical Faults (Priority 1)			
8x5* Remote Technical Support			
Self-installed Security Update Services			
Self-installed Software Updates			
1-Year Hardware Repair			

NOTE:

*9am-5pm GMT, Mon-Fri excluding public holidays.

The service duration for DIMETRA Express Warranty and Essential is 3 years, and the Advanced Service package has a duration of 6 years.

You can purchase the following as options with any of the support packages:

- Extended Hardware Repair
- Hardware Repair with Advanced Replacement
- 2 or 3 day On-Site Technical Support

DIMETRA Express Online Training



1.5 h

DMT1087 DIMETRA Express
Installation, Configuration and
Maintenance



0.5 h

SLS0075 DIMETRA Express Sales
Training



0.5 h

DMT0038 DIMETRA Express
Redundant System Design, Installation,
Configuration, and Maintenance



0.5 h

DMT1114 DIMETRA Express Security
Features: Installation, Configuration,
and Maintenance



0.5 h

DMT0047 How to Program a TETRA
Radio



DIMETRA Express Instructor LED Training



2 days

DMT0036 DIMETRA Express
Installation, Configuration, and
Maintenance Workshop



2 days

DMT0070 DIMETRA Express Advanced
Workshop



2 days

DMT0072 DCX9000 Workshop



An aerial view of a large offshore oil rig at sunset. The rig is illuminated with warm lights, and the sky is a mix of orange, yellow, and purple. The ocean is visible in the background. The rig has multiple levels with various structures, including a crane and a flare stack with a flame.

DIMETRA EXPRESS: MIGRATION



DIMETRA EXPRESS - MIGRATION



DIMETRA MICRO

**SMOOTH MIGRATION
AND SITE UPDATES**



DIMETRA COMPACT



DIMETRA EXPRESS LEGACY



DIMETRA EXPRESS 2.3

**SUA - MOTOROLA SOLUTIONS
UPDATE PROGRAM**



MIGRATION



WHY YOU NEED TO MIGRATE YOUR EXISTING DIMETRA SYSTEM

MOTOROLA ANNOUNCED THE END OF LIFE OF DIMETRA IP COMPACT AND DIMETRA IP MICRO IN MAY 2018

All Support for DIPM and DIPC ended December 2021

Higher cost of maintaining your network

Your server is at risk of cyber attack

In the event a core server failure your network fails

Lead times for replacement parts are extremely high

Upgrade now to ensure continuity of service

MIGRATE EASILY FROM YOUR EXISTING DIMETRA SYSTEM

Simply replace your existing DIMETRA core with the standalone DIMETRA Express server

Preserves the investment in your existing Radio Access Network (RAN)

Can be scheduled during a regular service visit

No unplanned downtime

Onsite technical support for ease of migration

Full operator training

Up and running smoothly



MIGRATION





WAVE PTX



TM

TAKE INSTANTANEOUS COMMUNICATIONS FURTHER
WITH NETWORK-INDEPENDENT BROADBAND
PUSH-TO-TALK

Daniel Scotney

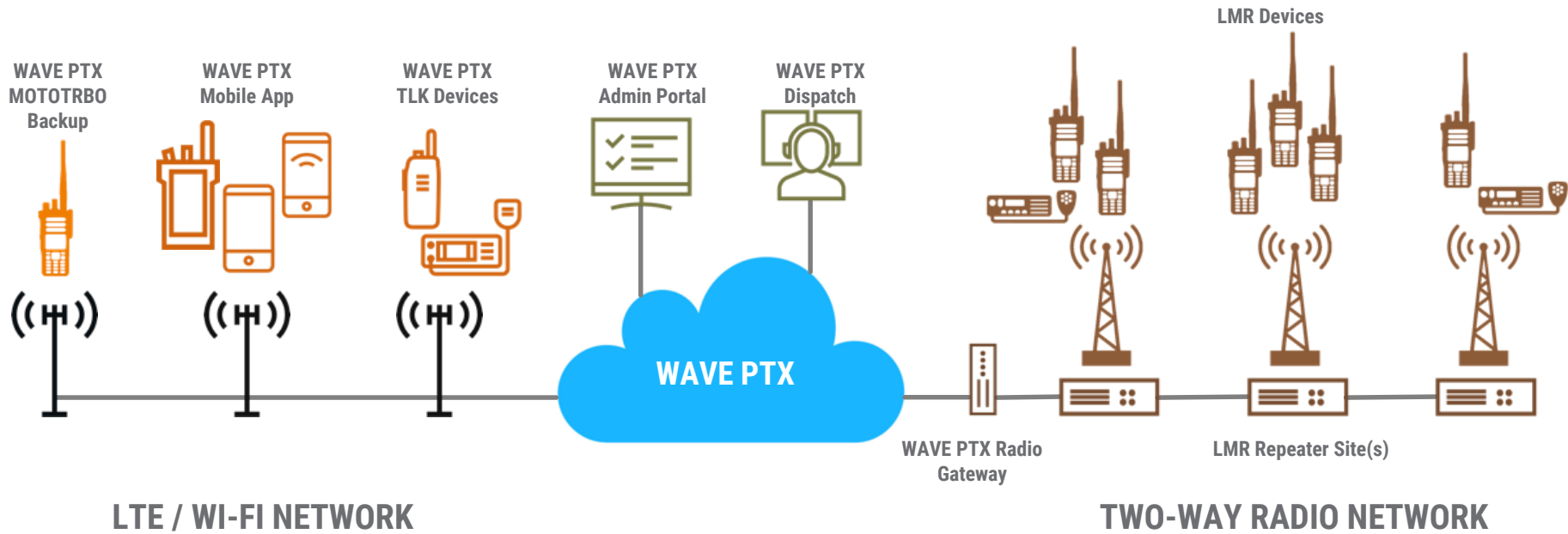
EMEA Sales



MOTOROLA SOLUTIONS

WAVE PTX LMR INTEROPERABILITY

ADVANTAGE OF WIRELINE INTEGRATION



SOLUTION BENEFITS

- Stay connected when outside your LMR coverage areas
- Bring non-radio users into the conversation
- Leverage existing devices that you already own
- Communications without compromise

FEATURES SUPPORTED

- Group calls & private calls
- Alias & Called ID
- Emergency receive functionality*
- Single gateway, multiple concurrent conversations

SYSTEMS SUPPORTED USING WIRELINE INTEGRATION

- MOTOTRBO IP Site Connect
- MOTOTRBO Capacity Max
- MOTOTRBO Capacity Plus
- DIMETRA Express
- All other systems supported via ROIP Gateway (Donor Radio)



MULTI TENANT GATEWAY

HARDWARE MINIMUM SPECIFICATIONS - TIER 1 (10 talkpaths)

Minimum Requirement

- Processor family - Intel 9th generation Core i5 (recommended i5-8500T/9500T)
- Process cores - 4/6 core with 2.2 Ghz
- RAM - 8GB DDR4
- Storage - 250GB SSD
- Networking - 1 NIC
- Remote management - Remote desktop connectivity
- Support - As per customer requirement
- Software requirement (customer to provide license keys only)
 - Windows 10 Pro OS

MSI recommendation : HP PRODESK 400 G5 DESKTOP MINI

Note : For Tier 1 hardware, the OS is required to be pre-installed by customer before initiating configuration request to MSI.

Note: Hardware monitoring is Customer's responsibility

Note: This hardware is recommended for iPSite Connect and Dimetra Express Interop.





DCX9000

FOR DIMETRA™ EXPRESS



MOTOROLA SOLUTIONS

VOICE

Utilises extensive DIMETRA dispatch capabilities and ensures a reliable connection – from any location.

- Voice calls – group and private
- Emergency calls
- Ambiance Listening calls
- Multiselect transmissions
- Group patching
- Motorola or any commercially available audio accessories
- Voice logs



TEXT

Share business-critical information as events unfold with workgroups and other stakeholders right from the dispatch console.

- Short Data Messages (SDS) over TETRA – incoming and outgoing
- Instant messaging (sent via Telegram Messenger) supporting:
 - Chats
 - Multimedia messages
 - Supports any file type



This is a zoomed view for instructional purpose.



TRACK

Enable your team to communicate with vehicles and teams in-map quickly and easily.

- Automatic Vehicle Location (AVL) and mapping
- Monitor defined areas for safety and operational efficiency improvements.
- Real-time display of GPS position of TETRA terminals on a Web Map Service (WMS) such as OpenStreetMap.
- Click the map icon to establish an individual call via TETRA.
- Acquire GPS coordinates at regular intervals and track radio users.
- Create predefined geographical areas by drawing fences on the map (Geofencing).
- Apply rules to radios that can enter/exit geofences.



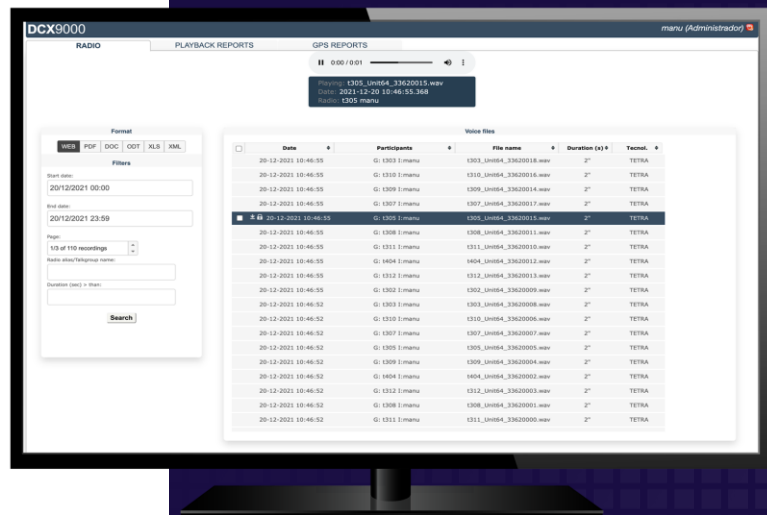
This is a zoomed view for instructional purpose.



RECORD

Instantly replay voice logs to confirm business-critical information when coordinating or reviewing a response.

- Search and playback voice calls.
- Calls and call-related data recorded with Archiving Interface Server (AIS).
- Recorded audio is decoded and converted to analogue for playback.
- Download as MP3 or WAV files – requires a security fingerprint.



CYBERSECURITY FEATURES:



DCX9000 Server

ISO 27001 Security Policies Applied:

- Information Security Policy
- Security Incident Management Policy
- IT Security Policy
- Information Classification Policy
- Service Availability Plan
- Corporate Security Architecture



Accredited in Software Engineering, Quality Requirements and Software Product Evaluation

ISO-25010 compliance in all aspects which include:

- Functional Suitability
- Performance efficiency
- Compatibility
- Usability
- Reliability
- Security
- Maintainability
- Portability



Complies with the cybersecurity requirements of the ENS

This includes the following:

- Equipment protection
- Communications Protection
- Protection of Information Media
- Protection of computer applications
- Data protection
- Protection of services

DCX9000 has also successfully passed internal product assessment security requirements by Motorola Solutions, Inc.



DIMETRA EXPRESS PACKAGE DEAL



Get your customers talking at a very competitive price

Buy the Complete Package for less than the Portable Radios alone

Package includes DIMETRA Express Server - MTS2 Base Station and MTP8550Ex or MXP600 Portable Radios

FLEXIBLE PACKAGE COMBINATIONS

PACKAGE 1

€79,880 | **\$80,000** | £69,168

Integrated
MTS2 Base Station and
DIMETRA Express Server



**x60
MTP8550Ex**
incl. antenna,
battery, Belt Clip,
SUC

PACKAGE 2

€55,916 | **\$56,000** | £48,418

Integrated
MTS2 Base Station and
DIMETRA Express Server



**x60
MXP600**
incl. antenna,
battery, Belt Clip,
Travel Charger

PACKAGE 3

€82,277 | **\$82,400** | £71,243

Standalone
DIMETRA Express Server
and MTS2 Base Station



**x60
MTP8550Ex**
incl. antenna,
battery, Belt Clip,
SUC

PACKAGE 4

€58,313 | **\$58,400** | £50,493

Standalone
DIMETRA Express Server
and MTS2 Base Station



**x60
MXP600**
incl. antenna, battery,
Belt Clip, Travel
Charger

Limited time offer of highly competitive price for DIMETRA Express Accredited Partners.
Offer closes 31st December, 2023
T1 partners and Distributors can place as many package orders as required during this period

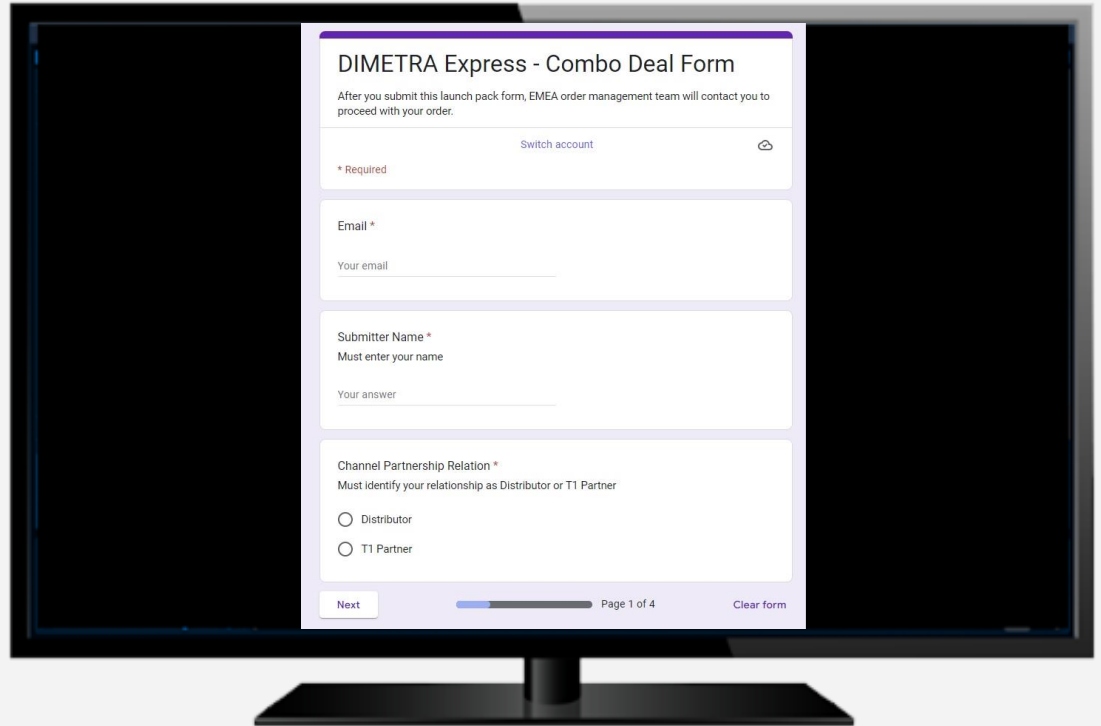


PACKAGE DEALS



HOW TO BUY

- Fill out the online form [here](#)
- Select your package and RF band
- You will be sent a confirmation email
- Send the email to the Ordering team dimexp@motorolasolutions.com



The image shows a computer monitor displaying a web form titled "DIMETRA Express - Combo Deal Form". The form is white with a purple header and footer. It contains the following fields and instructions:

- Title:** DIMETRA Express - Combo Deal Form
- Introductory text:** After you submit this launch pack form, EMEA order management team will contact you to proceed with your order.
- Field 1:** A text input field with a "Switch account" link and a share icon. A "* Required" label is positioned to the left.
- Field 2:** A text input field labeled "Email *". Below the field is the placeholder text "Your email".
- Field 3:** A text input field labeled "Submitter Name *". Below the field is the instruction "Must enter your name" and the placeholder text "Your answer".
- Field 4:** A text input field labeled "Channel Partnership Relation *". Below the field is the instruction "Must identify your relationship as Distributor or T1 Partner". There are two radio button options: "Distributor" and "T1 Partner".
- Footer:** A "Next" button, a progress bar, the text "Page 1 of 4", and a "Clear form" link.



THANK YOU



MOTOROLA SOLUTIONS

MOTOROLA, MOTO, MOTOROLA SOLUTIONS and the Stylized M Logo are trademarks or registered trademarks of Motorola Trademark Holdings, LLC and are used under license. All other trademarks are the property of their respective owners. © 2023 Motorola Solutions, Inc. All rights reserved.